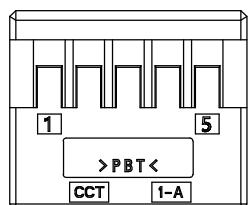
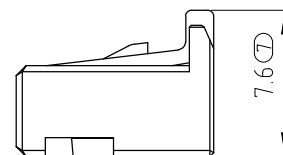
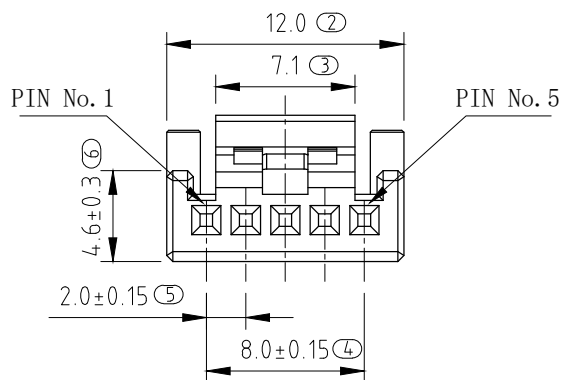
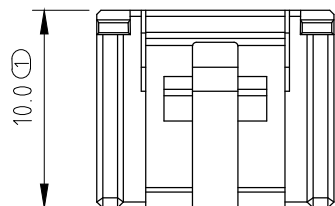


CUSTOMER DRAWING

RoHS

| Rev. | ECN No. | DESCRIPTION |
|------|---------------|------------------|
| A | ECN230417-003 | INITIAL RELEASE |
| B | ECN230508-016 | CANCEL DATE CODE |



NOTE
1. Applicable wire size: 20~22 AWG.

BOM

| NO. | NAME | MATERIAL | QUANTITY |
|---|---------|---|-------------------------|
| 1 | HOUSING | PBT-GF15 (Black) | 1 |
| TOLERANCES UNLESS OTHERWISE SPECIFIED | | 科信成精密技术 (江苏) 有限公司 COCENTRA PRECISION TECHNOLOGY (JIANGSU) Co. LTD. | |
| .X | .XXX | SERIES: | TITLE: HOUSING |
| .X | ±0.50 | X.° | ±1° |
| .XX | .X° | ±0.5° | FOR CCTHS 5 PIN FEMALE |
| THESE DRAWINGS AND SPECIFICATIONS ARE THE PRIOR WRITTEN CONSENT OF COCENTRA PRECISION TECHNOLOGY (JIANGSU) Co. LTD. AND SHALL NOT BE REPRODUCED. COPIED OR USED IN ANY MANNER WITHOUT THE PRIOR WRITTEN CONSENT OF COCENTRA PRECISION TECHNOLOGY (JIANGSU) Co. LTD. | | APPD: Simou Mou 23/05/08 | PART No.: BMP205-B13-PB |
| | | CKD: Daivid.Wang 23/05/08 | DWG No.: 307-0000-0436 |
| | | DR: BJ.Wang 23/05/08 | |
| | UNITS | MAT'L | FINISH |
| | mm | BOM | NA |
| | | SCALE | SHEET |
| | | NA | 1/1 |
| | | REV. | B |