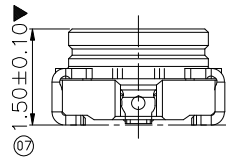
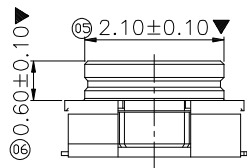
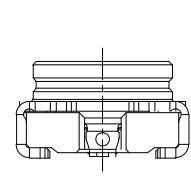
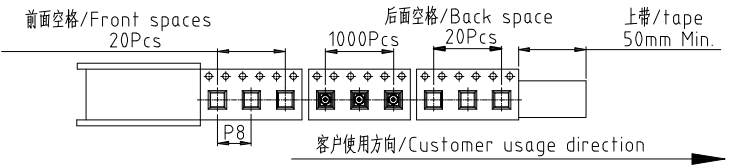
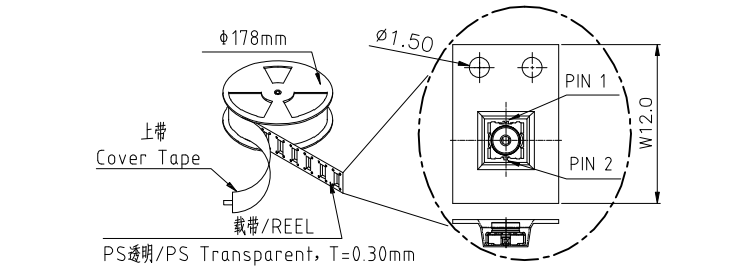
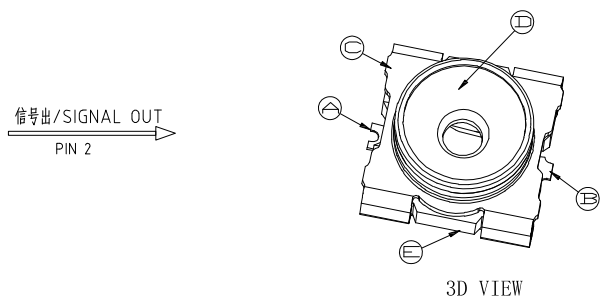
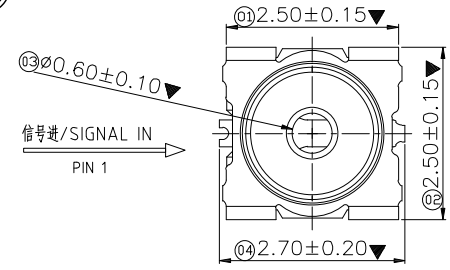
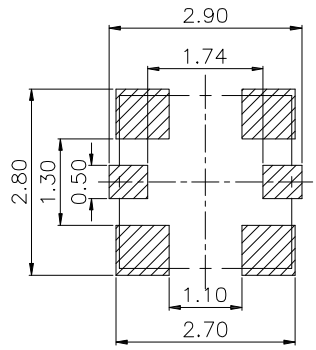
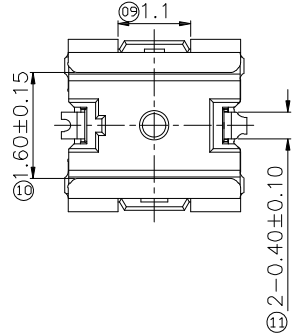


RoHS2.0+HF

REV.	ECN NO.	APPD.
A	ECN230617-001	Simon Mou



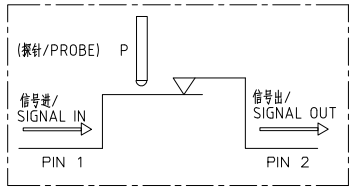
⑩	0.08	回流焊前/BEFORE REFLOW
⑪	0.10	回流焊后/AFTER REFLOW



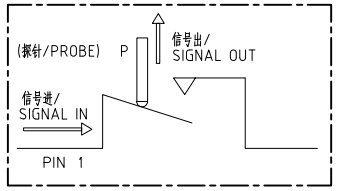
推荐的PCB布局/Recomed PCB Layout  
一般公差/General Tolerance: ±0.05

- NOTES:
- Power Rating: 2W
  - 频率范围/Frequency Range: DC~11GHz
  - Impedance: 50 Ω
  - Operating Temperature: -40℃~+85℃
  - Insulation Resistance: 500MΩ Min.
  - Withstanding Voltage: 300V AC & 1minute
  - Initial Contact Resistance: 120mΩ Max.
  - Durability: 500 cycles
  - Packing tape & reel: 1000Pcs/Reel (Φ178mm)
  - IR Reflow CYCLE: 2cycles

Voltage Standing Wave Ratio (VSWR):	Insertion loss:
1.2 max. (DC~3GHz)	-0.10dBmax. (DC~3GHz)
1.3 max. (3~6GHz)	-0.20dBmax. (3~6GHz)
1.5 max. (6~11GHz)	-0.60dBmax. (6~11GHz)



接触未配状态/  
STATE OF CONTACT UNMATED



接触配合状态/  
STATE OF CONTACT MATED

TOLERANCES UNLESS OTHERWISE SPECIFIED		UNITS	mm
X.±	X'.±	MAT'L	NA
.X± 0.3	.X'± 1.0'	FINISH	NA
.XX± 0.20	.XX'± 0.50'	QTY	NA

**COCENTRA**® 科信成精密技术 (江苏) 有限公司  
COCENTRA PRECISION TECHNOLOGY (JIANGSU) Co. LTD.

DWG NAME: CUSTOMER DRAWING TITLE: RF SWITCH 2.5\*2.5

APPD: Simon Mou 2023/06/17 PART NO.: RSAC-S212-01

CKD: David Wang 2023/06/17 DWG NO.: 307-0000-0428

DR: Y.Wang 2023/06/17

SCALE	SHEET	REV.
1:1	1/1	A

THESE DRAWINGS AND SPECIFICATIONS ARE THE PRIOR WRITTEN CONSENT OF COCENTRA PRECISION TECHNOLOGY (JIANGSU) Co. LTD. AND SHALL NOT BE REPRODUCED, COPIED OR USED IN ANY MANNER WITHOUT THE PRIOR WRITTEN CONSENT OF COCENTRA PRECISION TECHNOLOGY (JIANGSU) Co. LTD.